

PARCEL #7

320 Acres more or less with building site
(See Parcel #6 for building description)

FSA Information

289.3 Acres tillable plus 11.5 Acres CRP
(4.9 Acres CRP bid in at \$165.71/acre until 9-30-2018)
(6.6 Acres CRP bid in at \$155.30/acre until 9-30-2013)

Corn Base = 218.6 Acres

Yield = 123 Bushels

Estimated Real Estate Taxes = \$8,739

Average CSR rating - 73.9

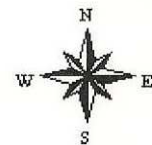
Bid dollar per acre.

Aerial Map



map center: 43° 0' 59.58, 92° 20' 51.06
scale: 9933

26-95N-13W
Chickasaw County
Iowa



2/15/2010

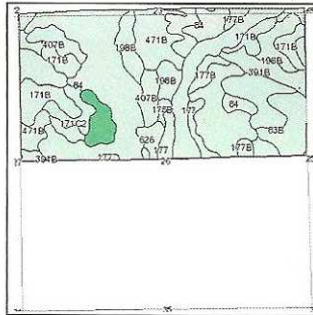
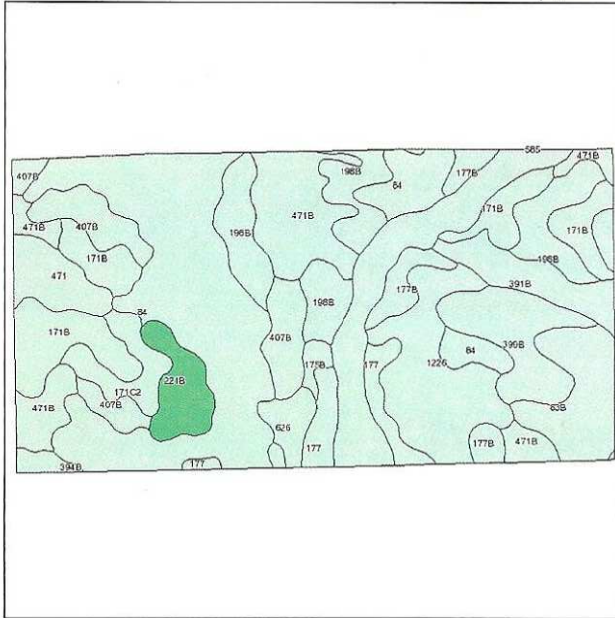
Maps provided by:



©AgriData, Inc. 2010
www.AgriDataInc.com

Field borders provided by Farm Service Agency as of 5/23/2008. Aerial photography provided by Aerial Photography Field Office.

Soils Map



State: **Iowa**
 County: **Chickasaw**
 Location: **026-095N-013W**
 Township: **Dayton**
 Acres: **320**
 Date: **2/22/2010**



Fsa borders provided by the Farm Service Agency as of May 23, 2008.
 Soils data provided by USDA and NRCS.

Code	Soil Description	Acres	Percent of field	CSR Legend	Non-Irr Class	CSR	Corn	Soybeans
84	Clyde clay loam, 0 to 3 percent slopes	72.4	22.6%		llw	74	186	50
198B	Floyd loam, 1 to 4 percent slopes	29.6	9.3%		llw	74	186	50
171B	Bassett loam, 2 to 5 percent slopes	29	9.1%		lle	79	193	52
471B	Oran loam, 2 to 5 percent slopes	28.8	9.0%		lle	79	193	52
1226	Lawler loam, 24 to 40 inches to sand and gravel, 0 to 2 percent slopes	24.8	7.7%		lls	71	182	49
585	Coland-Spillville complex, 0 to 2 percent slopes	23.8	7.5%		llw	85	201	54
407B	Schley loam, 1 to 4 percent slopes	18.6	5.8%		llw	69	179	48
399B	Readlyn loam, 2 to 5 percent slopes	15.6	4.9%		lle	84	199	54
83B	Kenyon loam, 2 to 5 percent slopes	15.2	4.8%		lle	84	199	54
391B	Clyde-Floyd complex, 1 to 4 percent slopes	10.5	3.3%		llw	72	183	49
177	Saude loam, 0 to 2 percent slopes	10.1	3.2%		lls	62	170	46
471	Oran loam, 0 to 2 percent slopes	8.6	2.7%		I	84	199	54
177B	Saude loam, 2 to 5 percent slopes	8.6	2.7%		lle	57	163	44
221B	Palms muck, 1 to 4 percent slopes	8.6	2.7%		Vw	25	120	32
171C2	Bassett loam, 5 to 9 percent slopes, moderately eroded	7.7	2.4%		llle	62	170	46
626	Hayfield loam, 0 to 2 percent slopes, rarely flooded	4.5	1.4%		lls	66	175	47
175B	Dickinson sandy loam, 2 to 5 percent slopes	1.8	0.6%		llle	54	159	43
171C	Bassett loam, 5 to 9 percent slopes	1.6	0.5%		llle	64	172	46
394B	Ostrander loam, 2 to 5 percent slopes	0.2	0.1%		lle	84	199	54
Weighted Average						73.9	186.1	50.1



United States Department of Agriculture Farm Service Agency

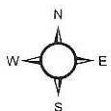


CHICKASAW
TWP: Dayton
SEC: 26

2009 Crop
Year

Farm Number
 6457
Tract Number
 7738

- Legend**
- 2008 Ortho Rectified Imagery
 - Restricted Use
 - ▽ Limited Restrictions
 - Exempt from Conservation Compliance Provisions
 - CLU Field Boundary
 - Tract Boundary

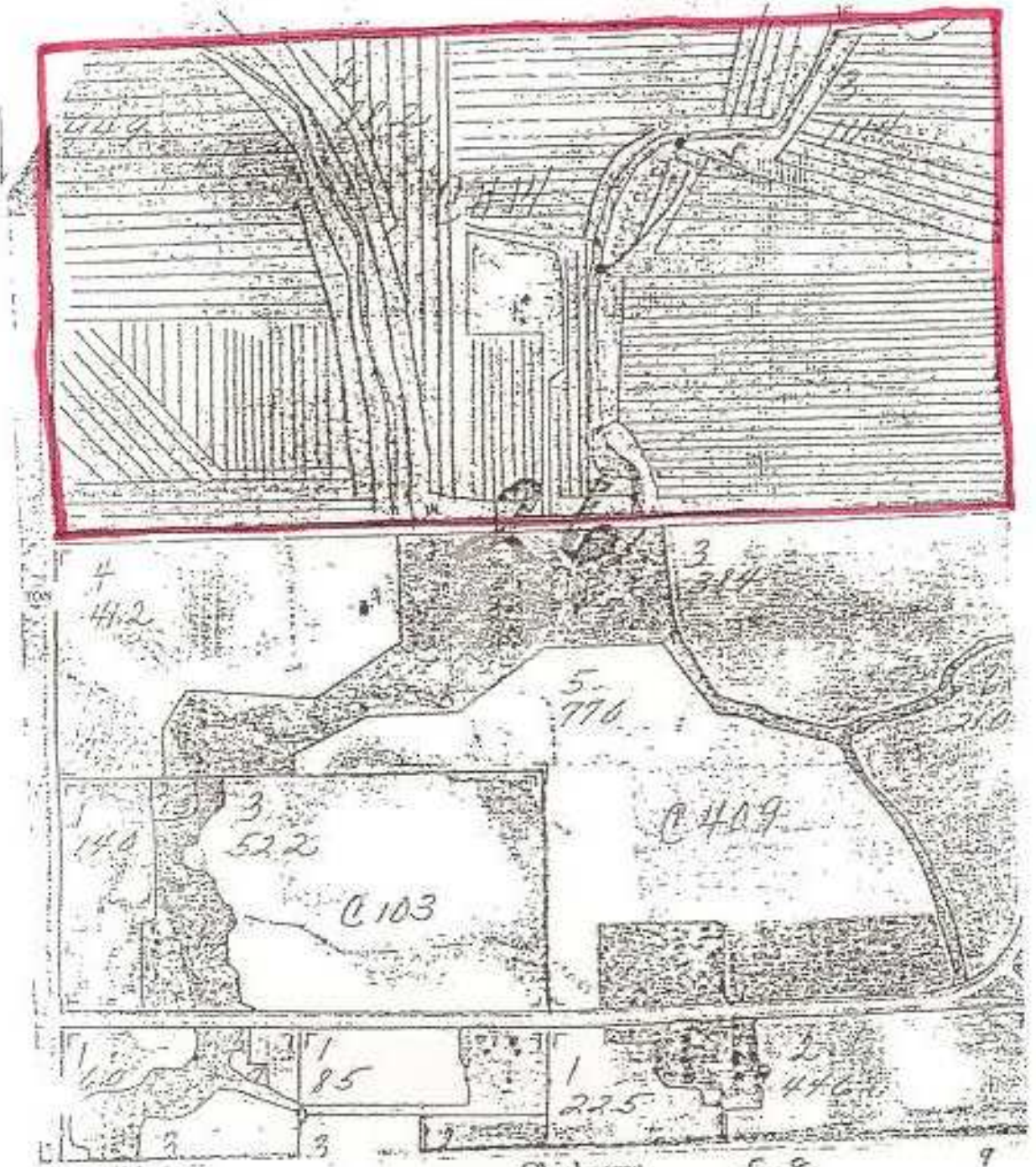


1 inch equals 660 feet

USDA FSA maps are for FSA Program administration only. This map does not represent a legal survey or reflect actual ownership; rather it depicts the information provided directly from the producer and/or the 2008 ortho rectified imagery for Iowa. The producer accepts the data "as is" and assumes all risks associated with its use. The USDA Farm Service Agency assumes no responsibility for actual or consequential damage incurred as a result of any user's reliance on this data outside of FSA Programs.

Wetland identifications do not represent the size, shape or specific determination of the area. Refer to your original determination (CPA-026 and attached maps) for exact wetland boundaries and determinations, or contact NRCS.

May 15, 2009



1:10,000 SCALE (1975 FLIGHT)

CROP YEAR - Chickasaw

F-8

9