

PARCEL #2

144.5 Acres more or less

FSA Information

142.1 Acres tillable

Estimated Corn Base = 102.9 Acres

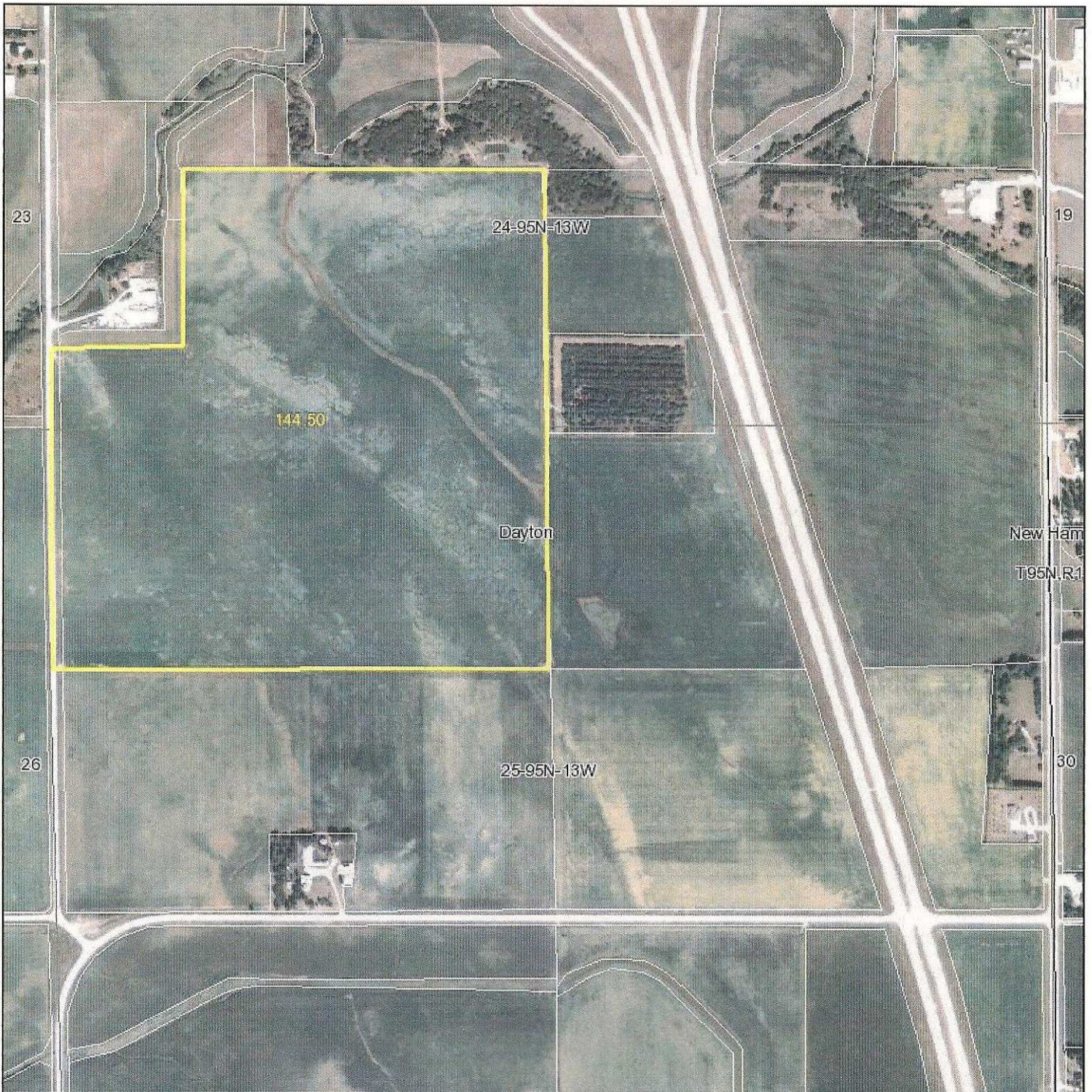
Yield = 123 Bushels

Estimated Real Estate Taxes = \$2,708.00

Average CSR rating - 74.3

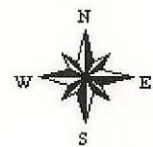
Bid dollar per acre.

Aerial Map



map center: 43° 1' 15.73, 92° 19' 40.39
scale: 10008

25-95N-13W
Chickasaw County
Iowa



2/15/2010

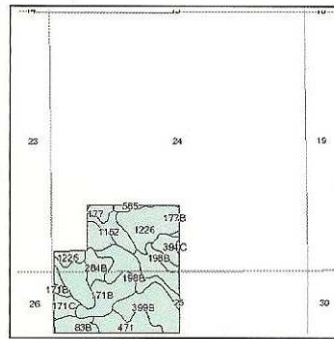
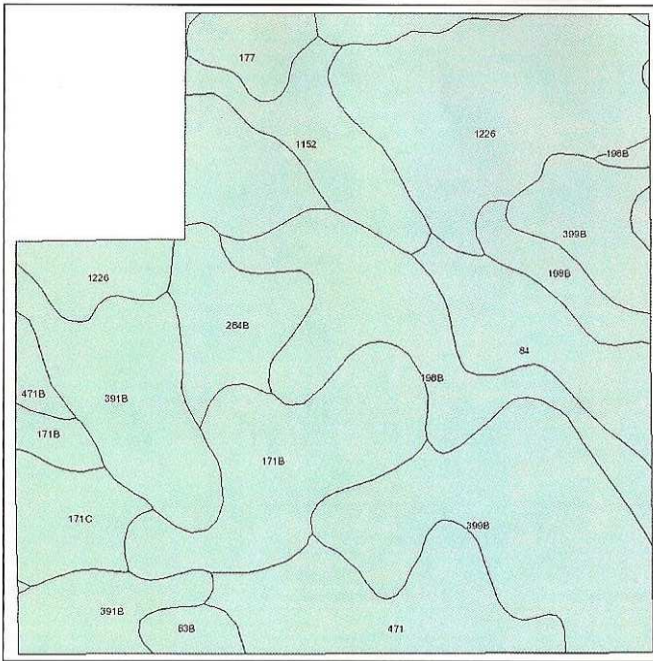
Maps provided by:



©AgriData, Inc. 2010
www.AgriDataInc.com

Field borders provided by Farm Service Agency as of 5/23/2008. Aerial photography provided by Aerial Photography Field Office.

Soils Map



State: **Iowa**
 County: **Chickasaw**
 Location: **024-095N-013W**
 Township: **Dayton**
 Acres: **144.5**
 Date: **2/15/2010**

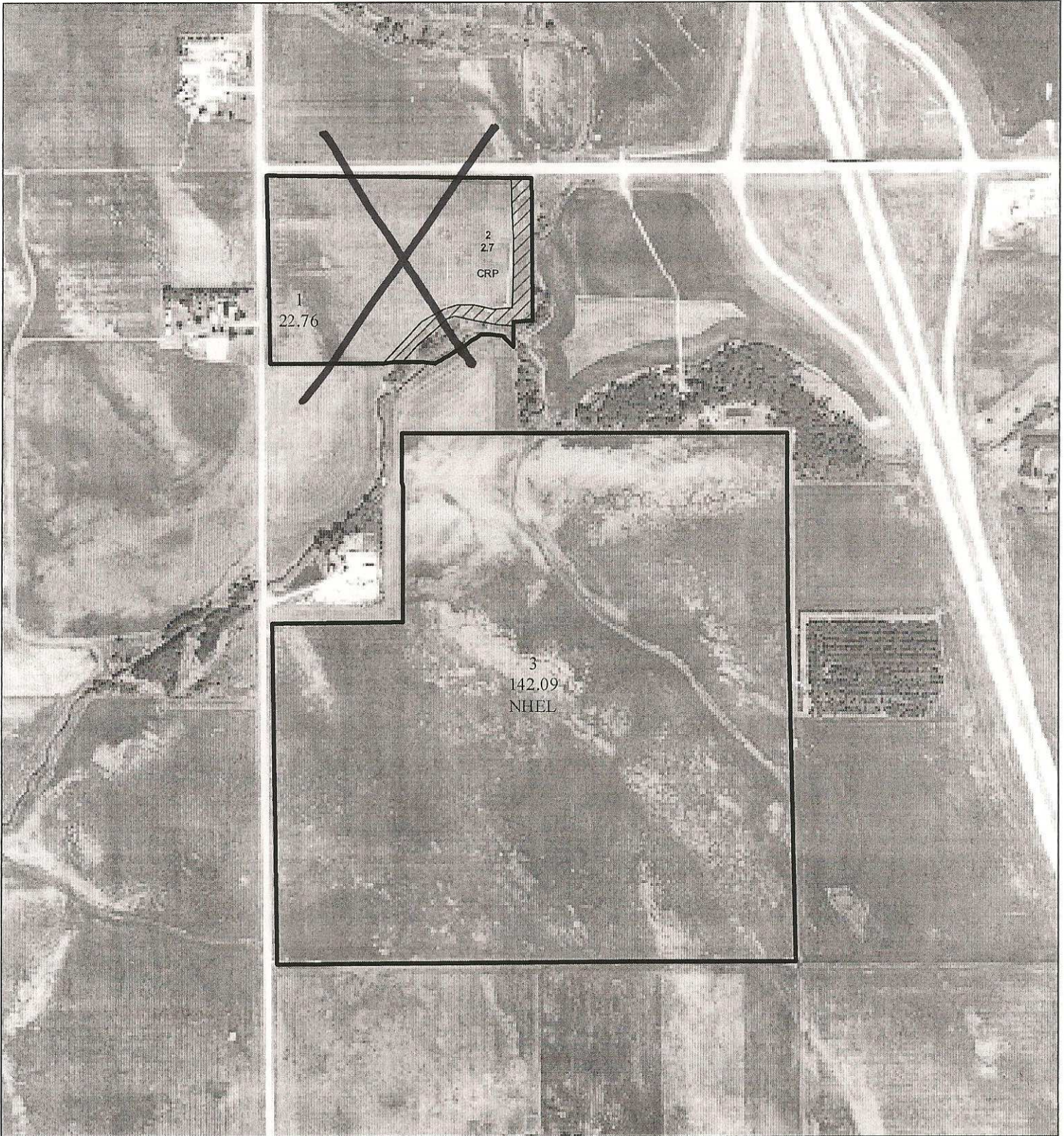


Maps provided by:

 ©AgriData, Inc 2008
 www.AgriDataInc.com

Fsa borders provided by the Farm Service Agency as of May 23, 2008.
 Soils data provided by USDA and NRCS.

| Code | Soil Description | Acres | Percent of field | CSR Legend | Non-Irr Class | CSR | Corn | Soybeans |
|-------------------------|------------------------------------------------------------------------|-------|------------------|------------|---------------|-------------|--------------|-------------|
| 1226 | Lawler loam, 24 to 40 inches to sand and gravel, 0 to 2 percent slopes | 27.6 | 19.2% | | IIs | 71 | 182 | 49 |
| 399B | Readlyn loam, 2 to 5 percent slopes | 23.8 | 16.5% | | IIe | 84 | 199 | 54 |
| 198B | Floyd loam, 1 to 4 percent slopes | 17.2 | 11.9% | | IIw | 74 | 186 | 50 |
| 171B | Bassett loam, 2 to 5 percent slopes | 15.3 | 10.6% | | IIe | 79 | 193 | 52 |
| 391B | Clyde-Floyd complex, 1 to 4 percent slopes | 15.3 | 10.6% | | IIw | 72 | 183 | 49 |
| 471 | Oran loam, 0 to 2 percent slopes | 11 | 7.6% | | I | 84 | 199 | 54 |
| 84 | Clyde clay loam, 0 to 3 percent slopes | 8.1 | 5.6% | | IIw | 74 | 186 | 50 |
| 1152 | Marshan clay loam, 0 to 2 percent slopes | 6.8 | 4.7% | | IIw | 67 | 176 | 48 |
| 284B | Flagler sandy loam, 2 to 5 percent slopes | 6.4 | 4.5% | | IIIe | 45 | 147 | 40 |
| 171C | Bassett loam, 5 to 9 percent slopes | 4.9 | 3.4% | | IIIe | 64 | 172 | 46 |
| 177 | Saude loam, 0 to 2 percent slopes | 3.1 | 2.1% | | IIs | 62 | 170 | 46 |
| 585 | Coland-Spillville complex, 0 to 2 percent slopes | 1.7 | 1.2% | | IIw | 85 | 201 | 54 |
| 83B | Kenyon loam, 2 to 5 percent slopes | 1.7 | 1.2% | | IIe | 84 | 199 | 54 |
| 471B | Oran loam, 2 to 5 percent slopes | 1.2 | 0.8% | | IIe | 79 | 193 | 52 |
| 394C | Ostrander loam, 5 to 9 percent slopes | 0.3 | 0.2% | | IIIe | 69 | 179 | 48 |
| 177B | Saude loam, 2 to 5 percent slopes | 0.1 | 0.0% | | IIe | 57 | 163 | 44 |
| Weighted Average | | | | | | 74.3 | 186.3 | 50.3 |



CHICKASAW
TWP: Dayton
SEC: 24

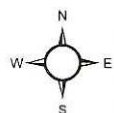
Farm Number
 6457

2009 Crop
Year

Tract Number
 9037

Legend

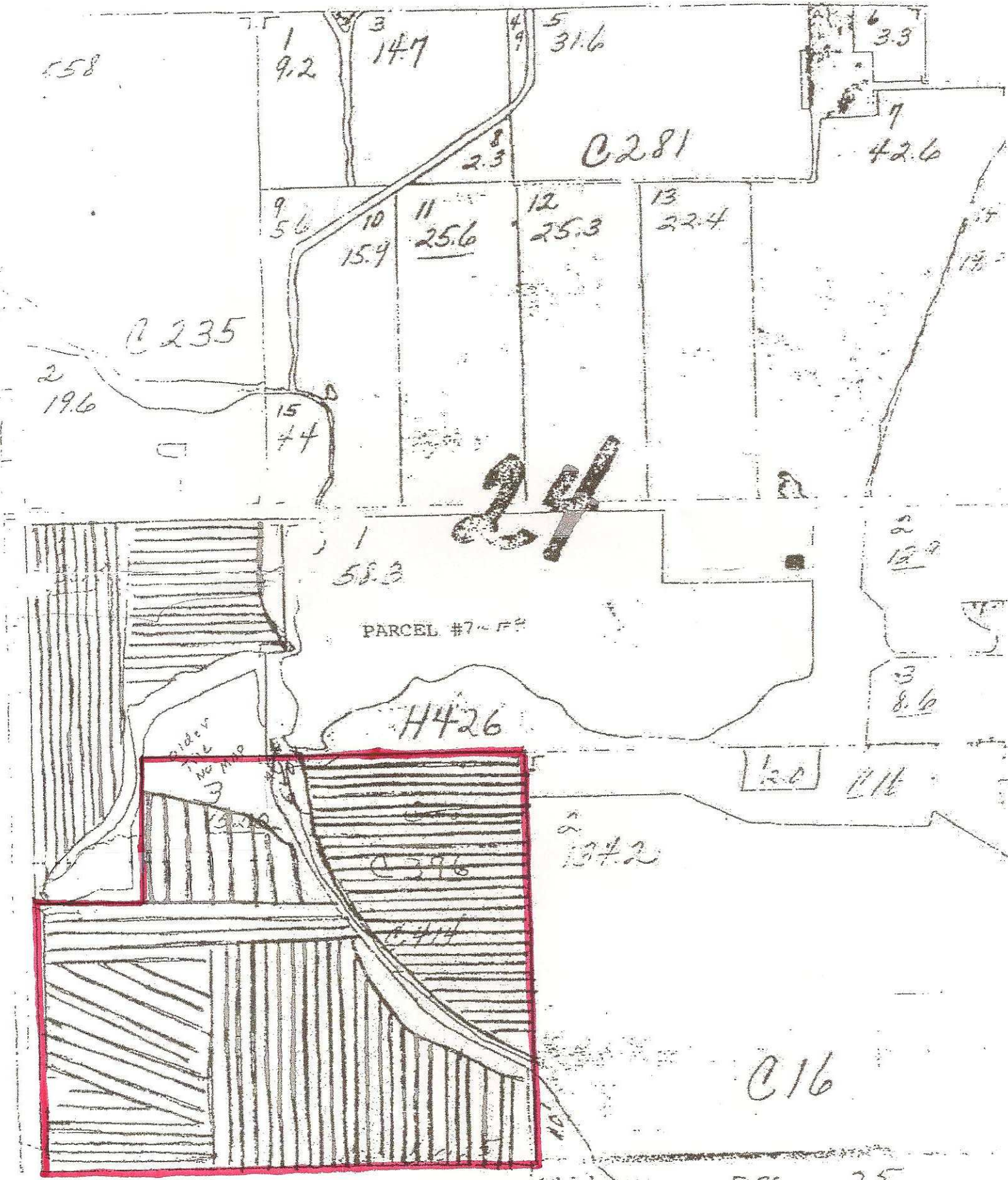
- 2008 Ortho Rectified Imagery
- Restricted Use
- ▽ Limited Restrictions
- Exempt from Conservation Compliance Provisions
- CLU Field Boundary
- ▭ Tract Boundary



1 inch equals 660 feet

USDA FSA maps are for FSA Program administration only. This map does not represent a legal survey or reflect actual ownership; rather it depicts the information provided directly from the producer and/or the 2008 ortho rectified imagery for Iowa. The producer accepts the data "as is" and assumes all risks associated with its use. The USDA Farm Service Agency assumes no responsibility for actual or consequential damage incurred as a result of any user's reliance on this data outside of FSA Programs.

Wetland identifiers do not represent the size, shape or specific determination of the area. Refer to your original determination (CPA-026 and attached maps) for exact wetland boundaries and determinations, or contact NRCS.



PARCEL #7-54

24

C235

C281

H426

C396

C414

C16

158

1
9.2

3
14.7

5
31.6

6
3.9

8
2.3

7
42.6

9
5.6

10
15.9

11
25.6

12
25.3

13
22.4

2
19.6

15
7.4

14
12.9

1
58.3

3
8.6

120
1.16

2
1.2

1.8 2.5