

PARCEL #3

119 Acres more or less

FSA Information

Approximately 109.4 Acres tillable plus 3.8 Acres CRP

(3.2 Acres CRP bid in at \$165.71/acre until 9-30-2018)

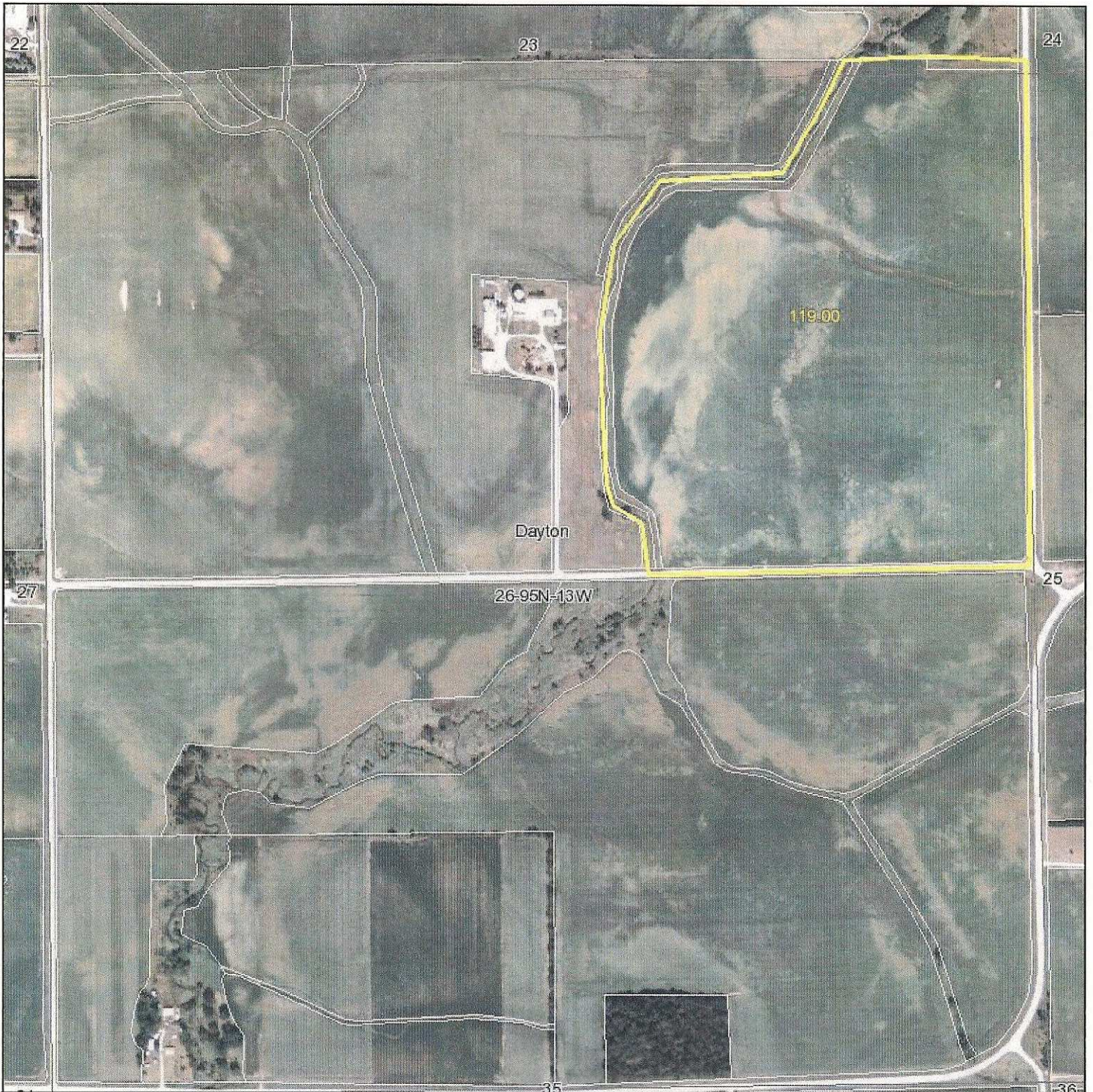
(0.6 Acres CRP bid in at \$155.30/acre until 9-30-2013)

Estimated Real Estate Taxes = \$2,128

Average CSR rating - 76.2

Bid dollar per acre.

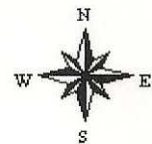
Aerial Map



map center: 43° 0' 57.69, 92° 20' 50.18

scale: 9933

26-95N-13W
Chickasaw County
Iowa



2/22/2010

Maps provided by:

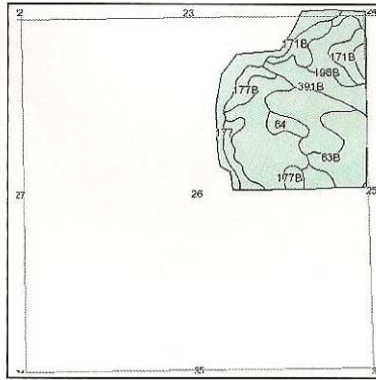
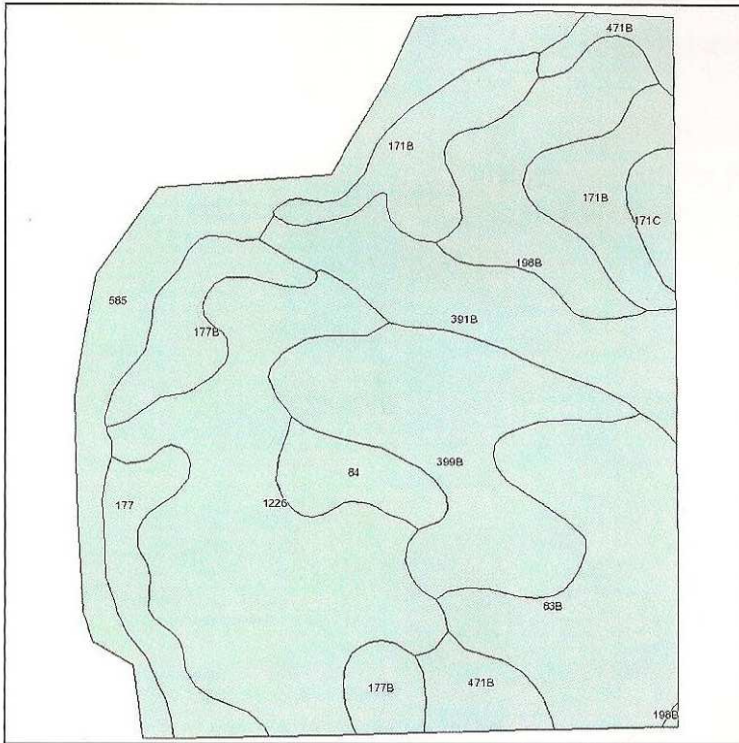


©AgriData, Inc. 2010

www.AgriDataInc.com

Field borders provided by Farm Service Agency as of 5/23/2008. Aerial photography provided by Aerial Photography Field Office.

Soils Map



State: **Iowa**
 County: **Chickasaw**
 Location: **026-095N-013W**
 Township: **Dayton**
 Acres: **119**
 Date: **2/22/2010**



Maps provided by:



©AgriData, Inc 2008
www.AgriDataInc.com

Fsa borders provided by the Farm Service Agency as of May 23, 2008.
Soils data provided by USDA and NRCS.

Code	Soil Description	Acres	Percent of field	CSR Legend	Non-Irr Class	CSR	Corn	Soybeans
1226	Lawler loam, 24 to 40 inches to sand and gravel, 0 to 2 percent slopes	25	20.9%	✘	Ils	71	182	49
399B	Readlyn loam, 2 to 5 percent slopes	15.6	13.1%	✘	Ile	84	199	54
83B	Kenyon loam, 2 to 5 percent slopes	15.3	12.9%	✘	Ile	84	199	54
585	Coland-Spillville complex, 0 to 2 percent slopes	13.3	11.2%	✘	Ilw	85	201	54
391B	Clyde-Floyd complex, 1 to 4 percent slopes	10.4	8.7%	✘	Ilw	72	183	49
171B	Bassett loam, 2 to 5 percent slopes	10.3	8.7%	✘	Ile	79	193	52
198B	Floyd loam, 1 to 4 percent slopes	8.6	7.3%	✘	Ilw	74	186	50
177B	Saude loam, 2 to 5 percent slopes	6.5	5.5%	✘	Ile	57	163	44
177	Saude loam, 0 to 2 percent slopes	4.6	3.9%	✘	Ils	62	170	46
471B	Oran loam, 2 to 5 percent slopes	4.4	3.7%	✘	Ile	79	193	52
84	Clyde clay loam, 0 to 3 percent slopes	3.5	2.9%	✘	Ilw	74	186	50
171C	Bassett loam, 5 to 9 percent slopes	1.5	1.3%	✘	Ille	64	172	46
Weighted Average						76.2	188.9	51

TILE MAP:

